



www.minutemanpostdrivers.com

MINUTEMAN & MINUTEMAN XL8 GAS/PETROL POST DRIVERS



Model 350001
Minuteman
Fixed Handle



Model 350010
Minuteman XL8
Rotating Handle

WARNING

READ THIS MANUAL BEFORE USING THIS POST DRIVER. FAILURE TO READ THIS MANUAL COULD RESULT IN PERSONAL INJURY. This owner's manual is considered a permanent part of the post driver and should remain with the post driver if resold, rented or loaned.

OWNERS MANUAL

Safety, Operation and Maintenance
Original Instructions



000451.5.15.20

CONTENTS

Section	Page
Table of Contents.....	1
Safety Symbol Description	2
Introduction / Safety Symbol Definitions.....	3
Post Driver Safety.....	3-5
Operating Instructions	6
Starting the Engine	6
Rotating Handle	7
Installing an Adapter	7
Driving a Post	8
Maintenance	9
Service Instructions	10
Servicing Crankshaft and Piston Lubrication	10
Warranty	11
Minuteman Parts & Accessories List	12-13
Minuteman XL8 Parts & Accessories List.....	14-15
EC Certification.....	16
Troubleshooting	17

TAKE SAFETY SERIOUSLY

This book contains important safety information.
Please read it carefully.



Your safety, and the safety of others, is very important. The proper and safe use of your Minuteman® post driver and accessories is an important responsibility and should be taken seriously.

Keep this owner's manual available, so you can refer to it at any time. This owner's manual is considered a permanent part of the post driver and accessory and should remain with the post driver and accessory if resold.

The information and specifications included in this publication were in effect at the time of approval for printing. Minuteman Marketing, Inc. reserves the right, however, to discontinue or change specifications or design at any time without notice and without incurring any obligation whatever. No part of this publication may be reproduced without written permission from:

Minuteman Tool Company

To help you make informed decisions about safety, you will find important safety information in a variety of forms, including:

- Safety Labels on the post driver and accessories.
- Safety Messages Preceded by a safety alert symbol and one of three signal words, DANGER, WARNING, or CAUTION. These signal words mean:



Immediate hazards that will result in severe personal injury or death.



Hazards or unsafe practices that could result in personal injury.



Hazards or unsafe practices that could result in injury, product or property damage.

- Safety Headings such as IMPORTANT SAFETY INFORMATION.
- Safety Section such as POST DRIVER SAFETY.
- Instructions how to use this post driver correctly and safely.

IMPORTANT

Proof of purchase date and post driver serial number is required for warranty repairs. Refer to the warranty information in the back of this manual and online at:

www.minutemanpostdrivers.com/warranty

Purchase Date: _____

Purchase Location: _____

Serial Number: _____



The serial number is on the body, at the side, of your Minuteman Post Driver.

POST DRIVER SAFETY

Congratulations on your selection of the Minuteman Post Driver. We are certain that you will be pleased with your purchase. Please read this manual and follow all safety, maintenance and operating procedures. The success that you experience with this tool is dependent upon your knowledge and understanding of how to properly operate and care for the engine and components installed on your new post driver.

As you read this manual, you will find information preceded by a NOTICE symbol. That information is intended to help you avoid damage to your post driver, other property, or the environment.

We suggest you read the warranty information fully and understand its coverage and your responsibilities of ownership. Read the warranty information on (see page 11) and visit our on line registration at - www.minutemanpostdrivers.com to receive your Minuteman® 1-year Warranty.

When your Minuteman® Post Driver and engine needs scheduled maintenance, the instructions in this manual should be used to perform basic, regular maintenance. The technical service staff here at Minuteman is available Monday through Friday, 8 a.m. to 5 p.m. CST to direct you through the process, or suggest electronic support materials or videos as guides on www.minutemanpostdrivers.com






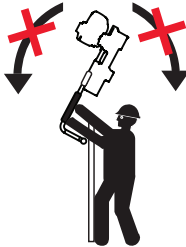
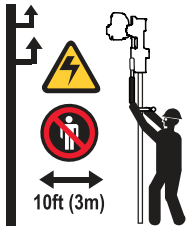

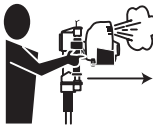
If part replacement or repair beyond regular maintenance indicated in this manual is required, contact the Minuteman customer service department to determine availability of parts and service.

Kindest Regards,

Minuteman Marketing, Inc.
A Subsidiary of Rhino Tool Company

INTRODUCTION



SAFETY SYMBOL DEFINITIONS

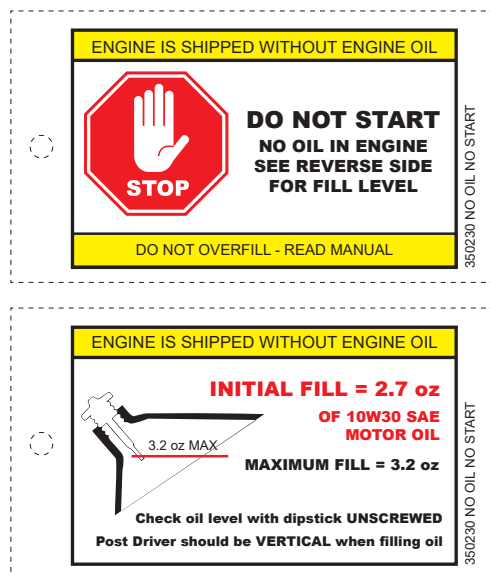
	General Warning sign to indicate a need for safety precautions.
	Read operation manual and accompanying literature before operating this tool.
	Wear anti-vibration gloves when operating.
	Wear safety glasses and ear protection before operating this tool.
	Wear boots when operating.
	<p>Maintain Balance:</p> <ul style="list-style-type: none"> - Insert Post with post driver on ground, use handles and pole to lift into vertical position to begin driving post. - Maintain Solid Footing. - Use caution when lifting post driver off of driven post. - Keep post driver centered vertically, do not lift driver at extreme angle overhead.
	<p>When lifting post driver watch out for:</p> <ul style="list-style-type: none"> - Overhead hazards - Power lines - People and Surroundings
	Risk of fire warning. Gasoline is highly flammable and explosive. Turn engine off when refueling. Keep flammable objects away.
	Toxic carbon monoxide risk. Turn engine away from operator. Do not use in an enclosed area.

POST DRIVER SAFETY

IMPORTANT SAFETY INFORMATION

SAFETY SYMBOL DEFINITIONS

WARNING HOT SURFACE	Use caution around the metal body of the post driver after operation. The metal gets very hot and should not be touched without gloves. Wear proper PPE to prevent skin burns.
	Use caution. Surface of engine can become hot. Do not touch without gloves and wear proper PPE to prevent skin burns.
	Call locating service to have underground utilities marked before driving any post into the ground.



CALIFORNIA PROP 65 INFORMATION

WARNING Internal Combustion Engine Products:

This product can expose you to chemicals including soots, tars, and mineral oils, which are known to the State of California to cause cancer, and carbon monoxide, which is known to the State of California to cause birth defects or other reproductive harm. For more information go to www.P65Warnings.ca.gov.

WARNING LABELS

If your post driver's warning label is marred or destroyed, replace it immediately. Simply call Minuteman Marketing, Inc. and we will send you a new warning label at no expense to you.

The Minuteman® Gas Powered Driver is designed to drive t-post, fence post, ground rod, vineyard post, form pin, and other like items into the ground.

CAUTION Uses, other than those intended, can result in injury to the operator as well as those around the operator. Damage to the driver and to the surrounding area may result as well.

DANGER DO NOT allow children to operate this tool. Most accidents can be prevented if you follow all instructions in this manual and on the post driver. The most common hazards are discussed below, along with the best method to protect yourself and others.

WARNING UNDERGROUND UTILITIES: Driving a post into an underground utility can be EXTREMELY DANGEROUS, exposing the operator and those around to potentially life threatening danger. Damage to surrounding property can also occur as a result of a post being driven into an underground utility. Be absolutely certain that you are aware of all underground utilities in the area in which you intend to drive posts. Ensure that a certified locating service has identified all underground utilities prior to beginning your project. Failure to do so can be catastrophic. Underground utilities include but are not limited to: Electric, Gas, Telephone, Water, Sewer, TV Cable, Lawn Sprinklers, etc.

WARNING GASOLINE: Gasoline is HIGHLY FLAMMABLE and EXPLOSIVE. You can be burned or seriously injured when handling fuel.

WARNING EXHAUST: The exhaust from the engine contains poisonous carbon monoxide gas that can build up to dangerous levels in closed areas. Breathing carbon monoxide can cause unconsciousness or death. Never run the engine in a closed or even partly closed area. The engine exhaust from this product contains chemicals known to the State of California to cause cancer, birth defects or other reproductive harm. Use only in a well ventilated area.

WARNING The Ductile Steel body and engine of the Minuteman Post Driver can become hot and cause burns to skin after driving posts. Wear gloves and PPE to prevent possible burns from direct skin contact with the metal body or engine of the post driver.

WARNING ENGINE MAINTENANCE: Improperly maintaining the engine on this power tool, or failure to correct a problem before operation, can

IMPORTANT SAFETY INFORMATION

cause a malfunction in which you can be seriously hurt. In accordance with the engine owner's manual, always perform a pre-operation inspection of the engine before each use and correct any problem.

⚠ WARNING DRIVER MAINTENANCE: Improperly maintaining the driving mechanism on this power tool, or failure to correct a problem before operation, can cause a malfunction in which you can be seriously hurt.

In accordance with this manual, always perform a pre-operation inspection of the driving mechanism before each use and correct any problem.

⚠ WARNING Do not lend or rent your post driver without the instruction manuals. Be sure that anyone using it understands the information contained in these manuals.

⚠ WARNING Minors should never be allowed to use this power tool. Bystanders, especially children, and animals should not be allowed in the area where it is in use.

⚠ WARNING NEVER let your power tool run unattended. When it is not in use, shut it off and make sure that unauthorized persons do not use it.

⚠ WARNING Do not operate this post driver unless the operator is wearing safety glasses, safety shoes, hearing protection, gloves or any other safety equipment advised by, ANSI, NIOSH, OSHA, or any other safety regulatory agency, the employer or the owner of this post driver.

⚠ WARNING Hearing protection is required as the post driver emits noise at 100 dB level. Bystanders should, at a minimum, wear safety glasses and hearing protection while in the presence of this power tool during operation. If not wearing protective gear, bystanders should keep a distance of 20 feet (6 m) from the post driver while in operation.

⚠ WARNING Only handle machinery by using the handlebars and foam handle grips and use caution when lifting and moving the post driver by hand.

⚠ WARNING Extreme prolonged use of any power tool (or other machines) exposing the operator to vibrations may produce white finger disease or carpal tunnel syndrome.

POST DRIVER SAFETY

In order to reduce the risk of white finger disease and carpal tunnel syndrome, please note the following:

- The Minuteman has been designed with anti-vibration handles to reduce the transmission of vibrations created by the machine to the operator's hands. An anti-vibration system is recommended for those persons using power tools on a regular or sustained basis.
- The handle opposite the throttle handle has been fitted with an EPDM foam grip further dampening vibrations.
- Wear anti-vibration gloves and keep your hands warm.
- Ensure that the EPDM foam and the spring dampening system are in good working condition.
- Ensure the post driver has no loose components. Loose components lead to high vibration levels.
- Maintain a firm grip at all times, but do not squeeze the handles with constant, excessive pressure. Take frequent breaks.

All of the above mentioned precautions do not guarantee that you will not sustain white finger disease or carpal tunnel syndrome. Therefore, continual and regular users should closely monitor the condition of their hands and fingers. If any of the above symptoms appear, seek medical advice immediately.

⚠ CAUTION DO NOT modify this power tool in any way.

⚠ CAUTION DO NOT operate your post driver unless it is on a post to be driven. Operation of the driver without it driving on a post (Dry-Firing) could damage the power tool.

⚠ WARNING SURROUNDINGS: This power tool emits noise which can exceed 100 Db, which may be disturbing to animals and livestock. Ensure prior to operation, that any animals are cleared and contained away from the operational area.

⚠ WARNING OVERHEAD: When lifting post driver check for overhead hazards such as power lines or other obstructions.

⚠ WARNING DO NOT use the driver without checking the area for uneven ground, trip hazards, and debris. It is important to maintain a stable footing and/ or surface while using the driver to avoid possible injury.

OPERATING INSTRUCTIONS

MINUTEMAN & MINUTEMAN XL8 POST DRIVERS

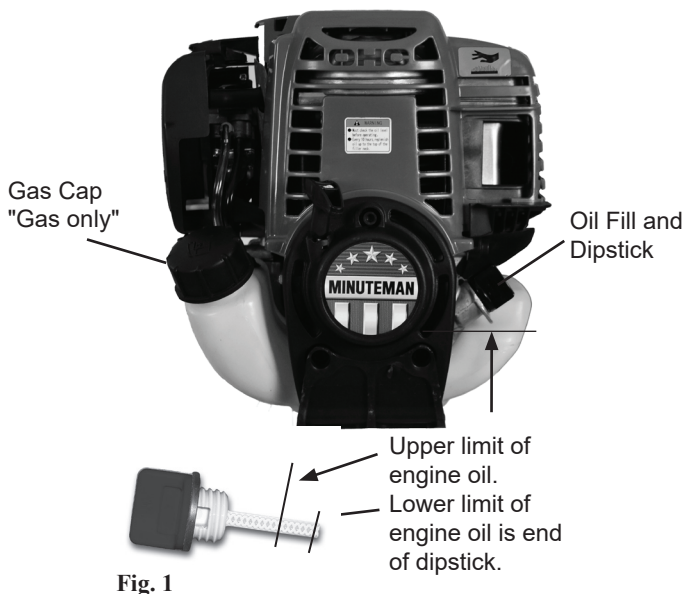
Your Minuteman® Gas Powered Post Driver is an efficient and effective power tool designed and developed to tackle a difficult and time consuming task, driving posts. It is very important to understand that your post driver is a very powerful machine. With proper care and maintenance, your Minuteman® will give you many years of trouble free service.

You must read and understand your post driver operating instructions before using the post driver. It is also very important that you make sure all operators are trained to operate your post driver safely. If you or any operator doesn't understand any of the instructions in this manual, call Minuteman, Inc., we will assist you with any questions you may have.

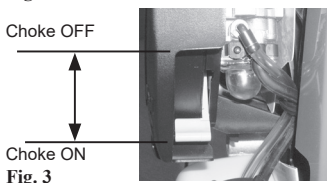
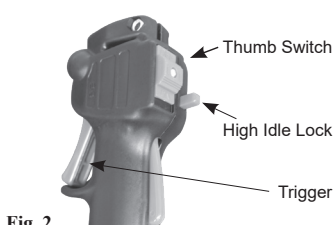
WARNING AVOID SERIOUS INJURY OR DEATH
READ THIS MANUAL BEFORE
USING YOUR POST DRIVER.

Visually inspect your Post Driver before use. The interior of the chuck should be checked for obstructions, damage or wear to the chuck tube and anvil inside. The outer surfaces of the driver should also be inspected for any defects. Do not use the if there is any damage or wear until the damage or wear is corrected and repaired. Check all fluid levels, i.e. engine oil and fuel and fill as needed as per manufacturer's specifications. (Fig. 1)

NOTE Proper oil level is essential to the operation of the post driver. Overfilling of the oil will result in loss of power and may cause permanent damage to the engine.



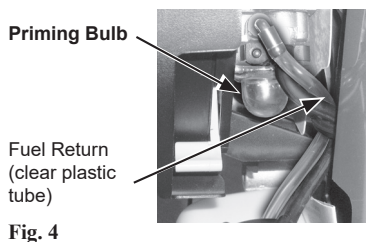
NOTE This engine is shipped without gasoline or oil. The first time you fill the oil use ONLY 2.7 oz of 10W30 SAE motor oil. The maximum fill level should not exceed 3.2 oz when refilling the oil. For a proper reading, do not screw the oil filler cap on completely and the post driver should be vertical when filling the oil. This engine does not require any mixing of oil and gas. Follow the engine manual filling instructions and use only clean, Unleaded Gas - US 86 Octane (>Euro 91).



STARTING THE ENGINE:

- 1.) Turn the thumb switch to the OFF position. (Fig. 2)
- 2.) Move the choke lever to the OFF position (Fig. 3)
- 3.) Use the High Idle Lock to lock the throttle into high idle position. This is done by depressing the Trigger and the High Idle Lock at the same time. (Fig. 2) The throttle is now in the high idle position.

NOTE Do not use the choke if the engine is warm or the air temperature is high. Leave the choke in the OFF position. Do not lock the throttle into the high idle position when starting a warm engine.



- 4.) Press the priming bulb several times until a fuel flow in the fuel return tube is visible in the clear-plastic fuel return tube. (Fig. 4)

- 5.) Slide thumb switch on throttle handle down or into the ON position. Grasp starter handle. (Fig. 5)

NOTE Do not extend the starter rope to its full length as it can cause damage the recoil mechanism.

CAUTION An operator should never wrap the starter rope around their hand. This will cause serious injury.



- 6.) Pull the starter grip lightly until resistance is felt, then pull briskly in the direction of the arrow as shown (Fig. 5) Return the starter grip gently.

MINUTEMAN & MINUTEMAN XL8 POST DRIVERS

OPERATING INSTRUCTIONS

CHART 1

DRIVABLE POST TYPES	MINUTEMAN	MINUTEMAN XL8
T-Post	Use 1.75" Adapter	Use 1.75" Adapter
1-3/8" Chain Link Line Post	Use 1.75" Adapter	Use 1.75" Adapter
1-5/8" Chain Link Line Post	1.75" Adapter or Master Chuck Only	Use 2" Adapter
1-7/8" Chain Link Line Post	NA	Use 2" Adapter
2-3/8" Chain Link Terminal Post	NA	Use 2.5" Adapter
2-7/8" Gate Post	NA	Chuck Only
2" Round Wood Post	Master Chuck Only	Use 2.5" Adapter
3" Round Wood Post	NA	Chuck Only
Ground Rod	Use 1" Adapter	NA
T-Post for Temporary Fence	Use 1.75" Adapter	Use 1.75" Adapter
Tree or Trellis Stake	Use 1.75" Adapter	Use 1.75" Adapter
Plow Marker	Use 1" Adapter	NA
Ground Anchor	Use 1" Adapter	NA
Form Pins	Use 1" Adapter	NA

MINUTEMAN XL8 ROTATING HANDLE OPERATION

The XL8 Post Driver handles can be extended to accommodate taller posts. To rotate the handles into the extended position, first make sure the post driver is either on the ground or on a stable, driven post. Both of the operator's hands must be free to open and release

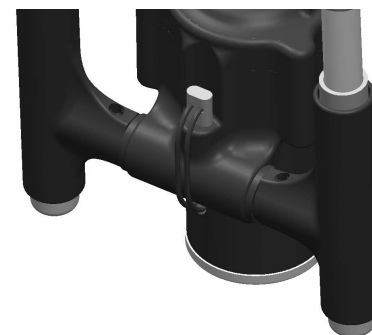


Fig. 7

the handle locking pin at the back of the post driver body (Fig. 7) to be able to turn the handles down. While the weight of the driver is supported independently from the operator, unhook the clip latch from the end of the pin. Slide out the locking pin and rotate the handles down until they are aligned

underneath the driver. Next slide the pin back into place, and stretch the clip latch over the end of the pin, until closed, to lock the handles in the downward position. The operator can then operate the driver as instructed in this manual.

WARNING ALWAYS HAVE THE ROTATING HANDLE LOCKING PIN IN PLACE WHEN DRIVING POSTS: Do not use the post driver

CAUTION

Do not allow the starter grip to snap back against the engine. Return it gently to avoid damaging the starter.

Gradually move the choke lever to the "ON" position, while simultaneously depressing the "Trigger" and immediately releasing it. This releases the "High Idle Lock" - DO NOT squeeze the "Trigger" all the way down and hold it without it driving a post. Dry-Firing in this manner could damage or shorten the life of your post driver.

INSTALLING AN ADAPTER

The Minuteman® Adapter System is comprised of the chuck, the locking pin and adapters. (Fig. 6) For driving t-post, chain link fence posts (1-3/8", 1-5/8", 1-7/8", 2-3/8" and 2-7/8"), 1" ground rods, or form pins, ground anchors, round wood posts up to 3" and tree stakes. The Minuteman™ is designed with a Quick Lock Adapter System. Using the correct Adapter will align the rod

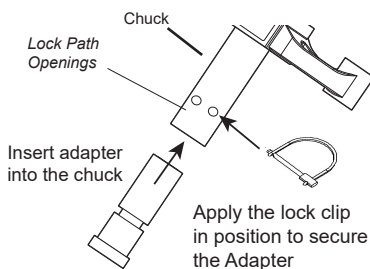


Fig. 6

or post to the optimum striking position. This prevents damage to the driver. Simply insert the adapter inside the chuck tube and push the lock clip through the lock path openings on the chuck. Then stretch the clip latch over the end of

the pin to secure the Adapter into place. See Chart 1 for post sizes and required Adapters.

CAUTION

CHUCK SIZE: A chuck or Adapter that is too large for the post being driven may damage the driver and may damage the end of the post. Using the appropriate Adapter will align the post to optimum striking position and prevent damage to the driver. See Chart 1 to specify the appropriate Adapter for your application. Chucks and Adapters wear out and should be replaced as needed. Inspect your driver's chuck and Adapters frequently.

CAUTION

ALWAYS HAVE THE LOCKING PIN IN PLACE WHEN DRIVING POSTS:

The locking pin should always be closed though the master chuck to keep the adapter in place during operation. The two-piece adapter design is a solution for the occasional flared post. Should a post flare and lodge inside the chuck when using the adapter, in most cases the operator can open and remove the locking pin, letting the adapter slide down the post, then lift the driver off the post. The operator can quickly re-insert the adapter, secure the adapter with the locking pin and resume driving posts.

OPERATING INSTRUCTIONS

MINUTEMAN & MINUTEMAN XL8 POST DRIVERS

before checking that the handle locking pin is engaged and in proper working order.



WARNING

LIFT PROPERLY AND MAINTAIN BALANCE WITH POST DRIVER

Insert Post with post driver on ground. (Fig. 8) Access ability to raise the post driver and pole. Get assistance lifting the driver and pole if needed. (Fig. 9) Use handles and pole to lift into vertical position to begin driving post. Maintain stable footing. Use caution when lifting post



Fig. 8

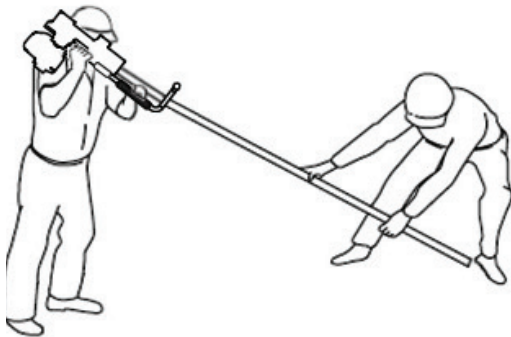


Fig. 9

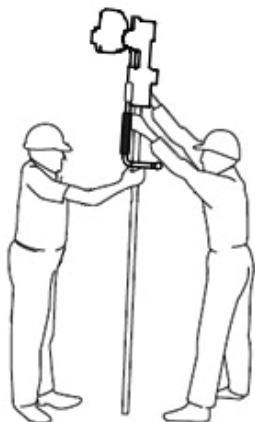


Fig. 10

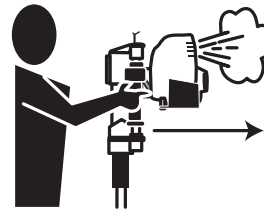


Fig. 11

driver off of driven post. (Fig. 10) Keep post driver centered vertically, do not lift driver at extreme angle overhead.

DRIVING A POST

Holding the post driver with your left hand on the foam grip and your right hand on the throttle will position the driver to direct the engine exhaust away from the operator (Fig 11). (See Exhaust Warning)

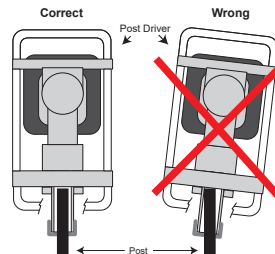


Fig. 12

When inserting a post into the driver, making sure the end of the post to be driven is in the correct location on the ground.

Align and center on the post as shown. (Fig. 12) If not aligned properly, damage could be caused to the driver or the post. Apply steady downward pressure to the handles and apply enough throttle to engage the clutch and hammer.

Check the post is level, before driving to the desired height.

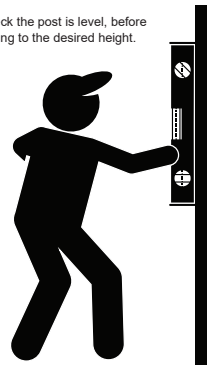


Fig. 13

Once you are confident that the post is driving straight, apply full throttle to the driver until the post is driven 6" and then use a level to check that the post is plumb. (Fig. 13)

Release the trigger dropping the engine RPM back to idle before removing from the post. When the engine has returned to idle, proceed to the next post repeating the previous method of driving a post.



WARNING

DO NOT DRIVE POSTS DURING LIGHTNING STORMS.

Lightning is unpredictable and can strike before or after rainfall. Driving post outdoors during any indication of possible lightning or storms can result in fatal injury from a lightning strike.

MINUTEMAN & MINUTEMAN XL8 POST DRIVERS

MAINTENANCE INSTRUCTIONS

MAINTENANCE OF THE MINUTEMAN® AND MINUTEMAN XL8

⚠ WARNING NEVER REFUEL WITH THE ENGINE HOT OR RUNNING

Never refuel your Minuteman with the engine hot or running as there is a possibility the flammable fumes from the gasoline can ignite, causing severe injury and/or damage to your post driver and surrounding area. Follow engine manufacturer's instructions for the refueling of the engine.

⚠ WARNING DO NOT OPEN CRANKCASE COVER WHILE ENGINE IS RUNNING.

With each use check the engine oil level, air filter, and all fasteners. If necessary, add oil, lubricant, clean or replace the air filter and tighten any loose nuts, bolts, or any other fastener.

Change engine oil as per engine manufacturer's specifications (See separate engine manual that shipped with this post driver) Dispose of used oil in accordance with any local, state, or federal regulations.

To help insure years of operation, wipe down the Minuteman with a clean cloth after each days use.

Following the service requirements for the Minuteman will insure years of trouble free post driving. Always refer to the engine manual for maintenance and service on the engine. The following instructions are for the Minuteman® and Minuteman XL8 specifically with general instructions for the engine. Before any service is performed, remove the spark plug wire from the spark plug and ground it to the engine body to prevent any accidental start-up of the engine.

Each Use

- 1 Check engine oil level. Add SAE 10W-30 to top oil level off, if necessary.
2. Check engine air cleaner. If soiled, clean or replace.
3. Check crankshaft and piston lubrication. (See page 9 for instructions.)
- 4 Check all engine and post driver fasteners. Re-tighten to proper specifications if necessary.

⚠ CAUTION DO NOT USE EXCESSIVE FORCE. Using a torque wrench set to 132 lb/in (14.9 Nm) for stainless bolts or 251 lb/in (28.4 Nm) for black oxide bolts, tighten to the correct torque.

10 Hours Use

Change engine oil following the requirement for the engine as specified in the engine manual. Dispose of used oil according to all local, state, and federal regulations.

25 Hours of Use

Replace air cleaner elements. This should be performed more often if operated in dusty areas.

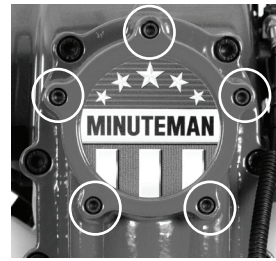


Fig. 14 - Crankcase Cover

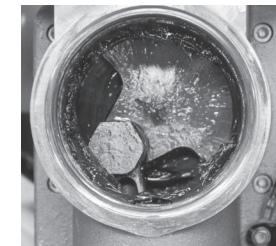


Fig. 15 - If ridge of lubricant measures 1/8" or less, add a small amount. At maximum level it should measure 1/4".

Servicing Crankshaft and Piston Lubrication

(Fig. 14) The crankcase cover can be removed by unscrewing the five screws on the front with an 5 mm hex key screw-driver.

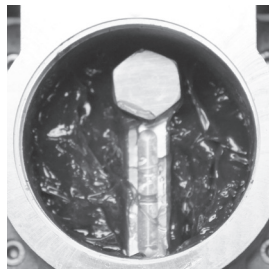
Visually inspect the color and amount of lubricant inside the crankcase. There should be a ring of lubricant collected to the wall inside the crankcase. Should the depth of the ring from the wall inward measure 1/8" (3mm) or less (Fig. 15) this indicates the lubricant is low. The maximum level should not be more than 1/4" (6mm). If the amount of lubricant appears to be low, add a small amount of lubricant. Use only EP 0 low viscosity lubricant.

⚠ CAUTION DO NOT OVERFILL the lubricant AS IT CAN DAMAGE THE DRIVER AND THE ENGINE.

MAINTENANCE & SPECIFICATIONS

MINUTEMAN & MINUTEMAN XL8 POST DRIVERS

Fig. 16 - Rotate Crankshaft until crank pin is in 12:00 o'clock position. After completely cleaning out old grease, add new lubricant until level with the bottom edge of the crank pin head.



In the event of complete removal of old lubricant and adding fresh lubricant (**Fig. 16**) rotate the crankshaft with connecting rod and crank pin until the crank pin is in the 12:00 position, then add lubricant. The level of lubricant should be to the bottom of the crank pin. Position the crankcase cover on the Minuteman, replace the five screws and use a 5 mm hex key screwdriver to tighten down the cover.

Perform a visual check of the post driver. Reconnect the spark plug wire to the spark plug. Check that the engine has the proper amount of oil. Start the engine using the proper procedure and test the post driver.

For more specific information on the Minuteman Post Driver engine and its care and maintenance, please refer to the separate engine owner's manual shipped with this post driver.

Storage:

Improper storage can reduce post driving efficiency and sometimes cause the engine to run sluggish or smoke. When storing your post driver, DO NOT lay it horizontally on the driver side or resting on the engine. If the unit cannot be stored securely in an upright position, place the chuck with locking nut installed on a flat surface, and lean it toward the engine side until it is supported by the shroud and chuck. This will position the driver on an angle with the top handle at the topmost point and the crankcase cover with logo facing upwards.



For quick digital access to your Minuteman Post Driver Owner's Manual from your cell phone, download any free QR code reader app and scan the QR code decal on your Minuteman Post Driver. The decal shown here should also be on your post driver.

Minuteman Specifications imperial (metric)

Overall Dimensions	11 x 14 x 25 in. (280 x 356 x 635 mm)
Weight	46 lb (21 kg)
Engine Configuration	4-stroke, 37.7 cc
Performance	1720 bpm
Fuel	Unleaded Gas, US 86 Octane (>Euro 91)
Fuel Capacity	0.67 US qt. (0.63 ltr)
Engine Oil	SAE 10W-30
Lubricant	EP 0 Low-Viscosity
Noise	≤ 100 Db
Vibration	> 4.7971 m/s ²

Minuteman XL8 Specifications imperial (metric)

Overall Dimensions	11 x 18 x 25 in. (280 x 457 x 635 mm)
Weight	51 lb (23 kg)
Engine Configuration	4-stroke, 35.8 cc
Performance	1720 bpm
Fuel	Unleaded Gas, US 86 Octane (>Euro 91)
Fuel Capacity	0.67 US qt. (0.63 ltr)
Engine Oil	SAE 10W-30
Lubricant	EP 0 Low-Viscosity
Noise	≤ 100 Db
Vibration	> 4.7971 m/s ²

End of Life Cycle

When your Minuteman® gas powered driver is coming to the end of its life cycle, destruction of the unit should to be conducted according to international and local environmental regulations.

The gas powered post driver contains:

- Fuel and Oil
- EP 0 Low-Viscosity Lubricant
- Electric components
- Plastic, steel and aluminum components.

MINUTEMAN & MINUTEMAN XL8 POST DRIVERS

POST DRIVER WARRANTY STATEMENT

Minuteman Limited Warranty:

Minuteman, Inc. warrants that Minuteman products will be free from defects in workmanship and materials, for a period of one (1) year from the date of original purchase. This warranty extends only to the original purchaser of the Minuteman product and is non-transferable.

Minuteman's obligation under this Limited Warranty is expressly limited to the repair or replacement, at Minuteman's election, of the defective product, which is proved to be defective upon inspection by a Minuteman-certified/authorized technician.

This Limited Warranty does not cover or apply to the following:

- The engine, which is subject to warranty from Shandong Huasheng Zhongtian Machinery Company
- Damage resulting from or repairs required because of:
 - use of supplies, parts, or attachments not sold or approved by Minuteman
 - normal wear and tear, including standard wear items (including O-rings, sleeves, chucks, adapters, and drive caps)
 - accident
 - repairs, alterations, or service by unauthorized persons
 - abuse, misuse, improper maintenance or operation

THIS WARRANTY IS EXCLUSIVE AND IN LIEU OF ANY OTHER WARRANTY, WRITTEN OR ORAL. MINUTEMAN DISCLAIMS ALL OTHER WARRANTIES, EXPRESS OR IMPLIED, ARISING UNDER STATUTE, CONTRACT OR COURSE OF DEALING, INCLUDING, BUT NOT LIMITED TO THE IMPLIED WARRANTIES OF MERCHANTABILITY AND FITNESS FOR A PARTICULAR PURPOSE.

IN NO EVENT SHALL MINUTEMAN, INC. OR ITS AFFILIATED ENTITIES AND THEIR RESPECTIVE OFFICERS, DIRECTORS, EMPLOYEES, OWNERS, OR AGENTS BE LIABLE FOR (1) ANY INCIDENTAL, SPECIAL, CONSEQUENTIAL OR PUNITIVE DAMAGES, OR FOR ANY COSTS, ATTORNEY

FEES, EXPENSES, LOSSES OR DELAYS ALLEGED TO BE AS A CONSEQUENCE OF ANY DAMAGE TO, FAILURE OF, OR DEFECT IN ANY MINUTEMAN PRODUCT INCLUDING, BUT NOT LIMITED TO, ANY CLAIMS FOR LOSS OF REVENUES, PROFITS OR BUSINESS AND (2) ANY AMOUNT IN EXCESS OF THE AMOUNT ACTUALLY PAID TO MINUTEMAN FOR THE APPLICABLE PRODUCT. THIS LIMITATION APPLIES BOTH DURING AND AFTER THE TERM OF THE WARRANTY.

This warranty gives you specific legal rights, and you may also have other rights which vary from state to state. Some states do not allow the exclusion or limitation of incidental or consequential damages, so the above limitation or exclusion may not apply to you. Some states do not allow limitation on how long an implied warranty lasts, so the above limitation may not apply to you.

Warranty Request Process - Requires Pre-Approval:

To initiate a warranty claim you must follow Minuteman's warranty request process:

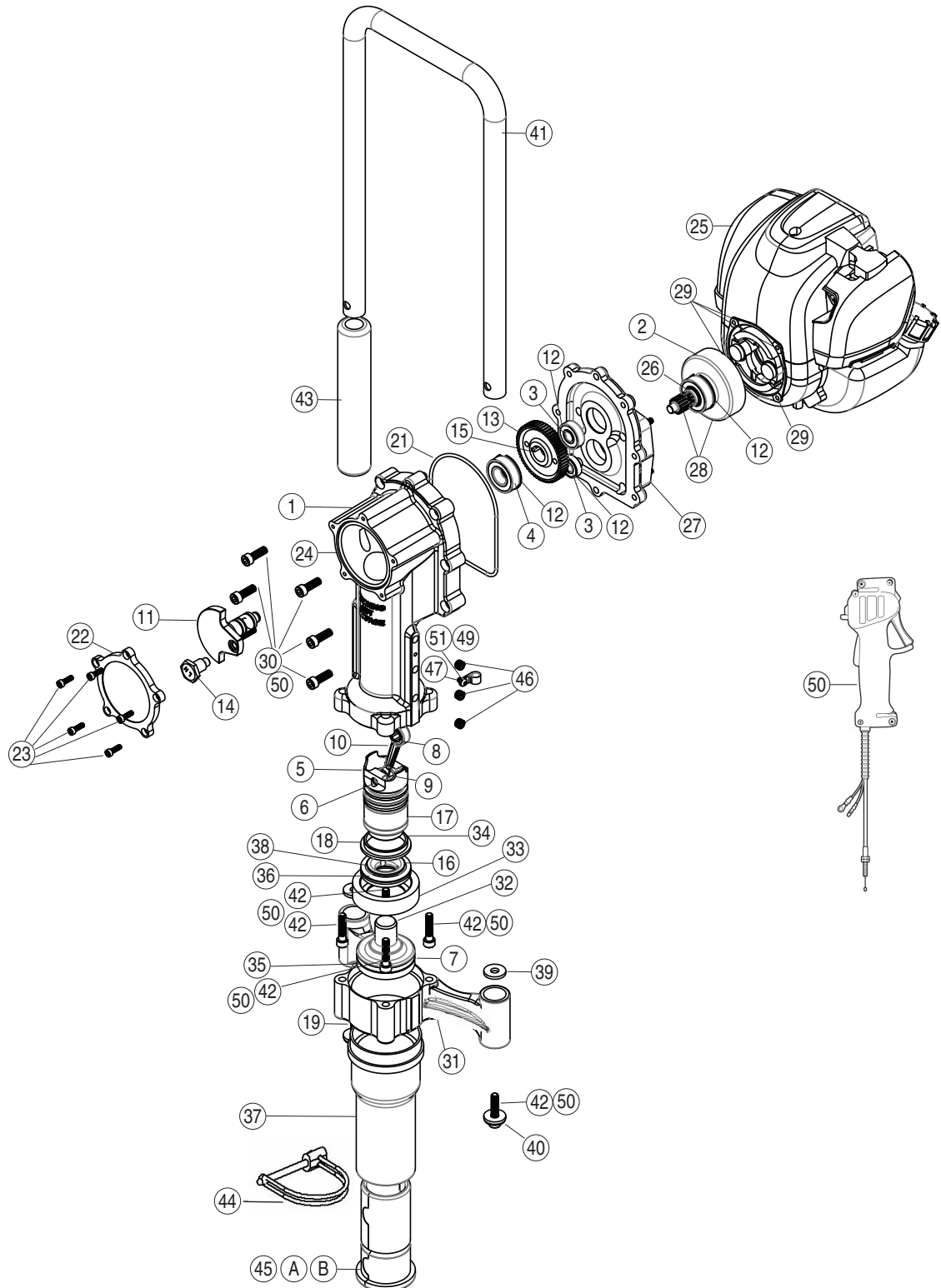
1. Open the on-line Minuteman Warranty Request Form. This form is found at: www.minutemanpostdrivers.com/warranty
2. Enter all requested background information (i.e. contact info, model, serial number and date of purchase).
3. Define the problem (e.g., what is it doing; what doesn't work, what broke).
4. Attach detailed photos that highlight all problems and possible issues.
5. Submit completed form by clicking "Submit" at the bottom of the form.

Once Request Form has been submitted, the Minuteman Service Department will review the request and respond. Minuteman personnel will provide one of the following responses:

(1) that the Warranty Claim has been approved, and including shipment instructions to return the affected product, or (2) that Minuteman requires more information to make a proper evaluation of the Warranty Claim, and including the nature of the additional questions, or; (3) that the request for Warranty has been denied, and including Minuteman's reasons for that decision.

NOTE

Disassembly of the Crankcase will break the tamper evident seal, thereby voiding the warranty on the driver

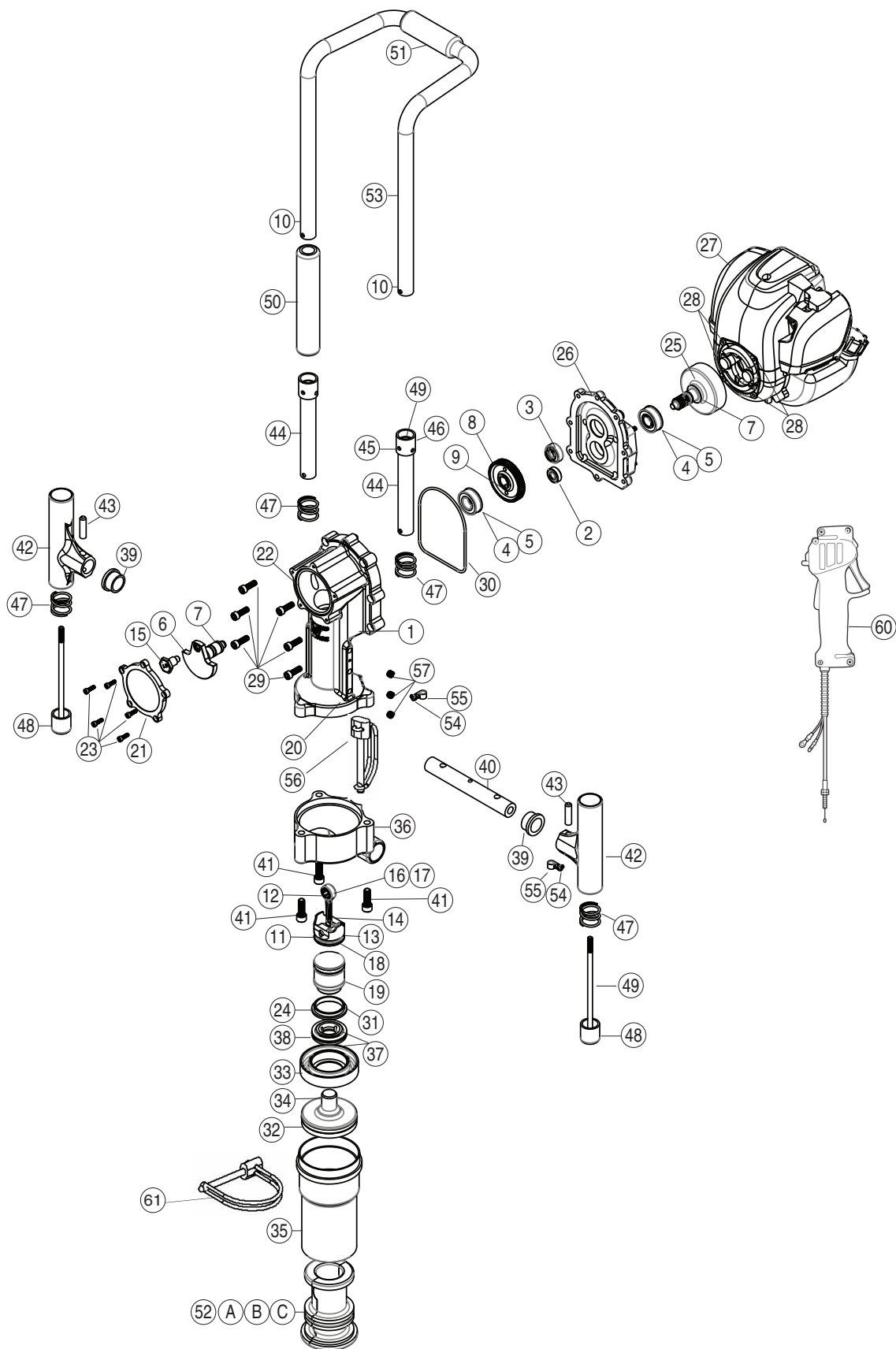


MINUTEMAN POST DRIVER

	PART NO.	DESCRIPTION	
1	350100	Body- Fixed Handle	1
2	350099	Bearing 20x24x12mm	2
3	350096	Retaining Ring - Internal	2
4	350097	Bearing 10x26x8mm	1
5	350104	Piston	1
6	350093	Wrist Pin	1
7	350092	O-ring	2
8	350094	Bearing HK1412FM	1
9	350095	Bearing HK1012F	1
10	350105	Connecting Rod	1
11	350106	Crankshaft	1
12	350090	Retaining Ring - External	4
13	350107	Gear	1
14	350108	Crank Pin	1
15	350089	Machine Key	1
16	350091	Retaining Ring - Internal	1
17	350109	Hammer	1
18	350110	Small Retainer	1
19	350088	Set Screw M15x2mm THD x 16mm	2
21	350085	O-ring	1
22	350103	CrankCase Cover	1
23	350084	Socket Head Cap Screw M5x0.8mm Thread x 16mm	5
24	350083	O-ring	1
25	10140	#140FA Husshengtai Shan Engine	1
26	350098	Bearing 12mmx32mmx10mm	1
27	350102	Clutch Housing	1
28	350111	Clutch Cup and Gear	1
29	350082	Socket Head Cap Screw	4
30	350081	Socket Head Cap Screw	6
31	350101	Lower Body - Minuteman - Fixed Handle	1
32	350112	Anvil - Minuteman	1
33	350113	Cup	1
34	350079	O-Ring	2
35	350080	O-Ring	1
36	350114	Large Retainer	1
37	350115	Chuck - Minuteman	1
38	350078	O-Ring	1

MINUTEMAN PARTS

39	350076	Anti-Vibe Washer - Minuteman	4
40	350077	Washer - Handle - Minuteman	2
41	350118	Handle Assembly Minuteman	1
42	350075	Socket Head Cap Screw	6
43	350074	EPDM Foam Grip	1
44	350121	Adapter Lock Pin	1
45-A	350120	Adapter - Minuteman - 45mm	1
45-B	350125	Adapter - Minuteman - 28mm	1
46	350122	Set Screw 1/8" NPT - 27x.29"	3
47	350124	Black Nylon Cable Clamp	1
48	-----	Loctite 243 THD Lock	AR.
49	-----	Loctite 565 THD Seal	AR.
50	350152	Throttle Assembly	1
51	350123	Panhead Screw M5x0.8-8mm	1



MINUTEMAN XL8 POST DRIVER

MINUTEMAN XL8 PARTS

	PART NO.	DESCRIPTION	
1	350200	Upper Body - XL8	1
2	350097	Bearing - 10mm x 26mm x 8mm	1
3	350098	Bearing - 12mm x 32mm x 10mm	1
4	350099	Bearing - 20mm x 42mm x 12mm	2
5	350096	Retaining Ring - Internal	2
6	350106	Crankshaft	1
7	350090	Retaining Ring - External	3
8	350107	Gear	1
9	350089	Machine Key	1
10	350086	Dowel Pin - Ø8mm x 18mm	2
11	350091	Retaining Ring - Internal	1
12	350093	Wrist Pin - Dowel Pin Ø10mm x 30mm	1
13	350104	Piston	1
14	350105	Connecting Rod	1
15	350108	Crank Pin	1
16	350094	Bearing - HK1412FM	1
17	350095	Bearing - HK1012F	1
18	350092	O-Ring	2
19	350109	Hammer	1
20	350088	Set Screw - M15 x 2mm Thread x 16mm	2
21	350103	Crankcase Cover	1
22	350083	O-Ring	1
23	350084	Socket Head Cap Screw - M5 x 0.8mm Thread x 16mm	5
24	350110	Small Retainer	1
25	350111	Clutch Drum and Gear	1
26	350102	Clutch Housing	1
27	10140	#140FA Husshengtai Shan 4 Stroke Engine	1
28	350082	Socket Head Cap Screw - M6 x 1.0 x 30.0mm	4
29	350081	Socket Head Cap Screw - M8 x 1.25mm x 25mm	6
30	350085	O-Ring	1
31	350222	O-Ring	1
32	350220	O-Ring	1
33	350204	Cup - Minuteman XL8	1
34	350203	Anvil - Minuteman XL8	1
35	350202	Chuck - Minuteman XL8	1
36	350201	Lower Body - Minuteman XL8	1
37	350079	O-Ring	2
38	350114	Large Retainer	1
39	350208	Bearing - Oilite FF-1211-1	2
40	350209	Axle	1
41	350210	Bolt - M10 x 1.5mm x 30mm	3

42	350191	Anti Vibe Housing	2
43	350211	Slotted Spring Pin Steel	2
44	350190	Anti-Vibe Tube Assy	2
47	350196	Handle Spring	4
48	350212	Handle Cup	2
49	350213	Handle Bolt - M8 x 1.25mm x 200mm	2
50	350074	EPDM Foam Grip - 203mm	1
51	350207	EPDM Foam Grip	1
52-A	350223	Adapter - Red 45mm Adapter	1
52-B	350224	Adapter - White 51mm Adapter	1
52-C	350225	Adapter - Blue 64mm Adapter	1
53	350187	Handle Complete MM XL8	1
54	350123	Panhead Screw M5x0.8-8mm	2
55	350124	Black Nylon Cable Clamp	2
56	350199	Handle Index Pin 8XL	1
57	350122	Set Screw 1/8 NPT-27X.29"	3
58	-----	Loctite 565 THD Seal	AR.
59	-----	Loctite 243 THD Lock	AR.
60	350198	Throttle Assembly	1
61	350219	XL8 Adapter Lock Pin	1

**EC DECLARATION OF CONFORMITY**

We declare under our sole responsibility that the product described as:

Gas Powered Post Driver of the type(s); 350001 (Minuteman) and 350010 (Minuteman XL8),

Manufactured by:
Minuteman Marketing, Inc.
A Subsidiary of Rhino Tool Co.
1134 West South Street
Kewanee, IL 61443
United States of America

To which this declaration relates, is meeting the applicable provisions of the following legislation:

Machinery Directive 2006/42/EC
EMC Directive EU 2014/30
Non-Road Mobile Machinery Directive EU 2016/1628

Technical and harmonised standards which were applied:

NEN-EN-ISO 12100:2010	Safety of machinery - General principles for design – Risk assessment and risk reduction
NEN EN 1037:1996+A1:2008	Prevention of unexpected start up
NEN-EN-ISO 20643:2008	Mechanical vibrations
NEN-EN-ISO 11200:2009	Acoustics - Noise emitted by machinery and equipment

Compilation of the CE Technical File and this Declaration has been fulfilled by the manufacturer.

The CE Technical File is available to national authorities, following a reasonable request, through the following authorised natural / legal person within the EU Community:

EuroGate International B.V.
Galileistraat 6
7701 SK Dedemsvaart
The Netherlands

Person empowered to draft this declaration on behalf of the manufacturer,

Minuteman Marketing, Inc.
A Subsidiary of Rhino Tool Co.

Name: James Martin

Date and place: 6 / 8 /2020, Kewanee IL, United States of America

Signature:



Symptom	Explanation/Procedure
Post lodged in the driver with adapter installed	Turn off the engine. Unlatch and slide out the locking pin that holds the adapter. Using the handles, lift post driver upward, allowing the adapter to slide out. If the pressure from the flared post does not allow you to lift driver off the post, insert a flat-head screwdriver in between the bottom of the metal chuck tube and the plastic adapter, to pry the adapter downward. Be careful not to damage the inside of the master chuck. Once loosened, lift using the post driver handles. As the two-piece adapter frees from the chuck tube they separate from the post. Reinsert the adapter, apply the locking pin and resume post driving.
Drives post slow or sluggish engine performance	Typically this is resulting from improper driver storage or over-filling the oil causing the oil to seep into the combustion chamber. Turn off the engine. Position the driver vertically; remove the dipstick to check oil level. (See page 6) If you need to remove some oil, dispose of it properly. If oil is at proper level, follow the procedure listed in "Pull-start is frozen or hard to pull."
Pull-start is frozen or hard to pull:	This typically results from oil seeping into the combustion chamber from improper driver storage or overfilling the oil reservoir of the engine. Remove spark plug and pull hand grip several times until it pulls freely. Replace the spark plug. Check the oil level in oil reservoir to ensure proper level (page 6). Follow starting procedure. It is not unusual, for blue smoke to be emitted from the engine, let the engine run until smoke clears.
High engine noise/ revving without hammer/anvil hitting post	First make sure the Anvil has not become stuck at the top of the inside of the post driver chuck. Using a firm grip on both handles, pick the driver up off the top of the post slightly and bring it back down on the post. Maintaining the contact of the Anvil with the post is important. Running the engine without engaging the Anvil (dry-firing) reduces the life of the engine. Make sure to maintain steady contact and pressure on the post while driving.
High engine noise/ revving without hammer/anvil hitting post and excessive grease leaking on post	First make sure the Anvil has not become stuck at the top of the inside of the post driver chuck (see above). If there are large amounts of grease (approx. 3 oz or more) on top of the post being driven the post driver O-rings may need to be replaced. Please contact Minuteman for further instructions on replacing O-rings.
Engine is not running properly.	Refer to the engine manual that was shipped with your post driver or contact Minuteman customer service.
Improper Storage:	Do not lay horizontally on the driver side or resting on the engine. If the unit cannot be stored securely in the upright position, place the chuck on a flat surface, leaning toward the engine side until it is supported by the shroud and chuck. Position the driver on an angle with the top handle at the topmost point.
Other problems or technical questions	Other problems or technical questions: Document your serial number and contact Minuteman Marketing, Inc. Phone: 309.853.5555 or Toll Free: 866-707-1808, Fax: 309.856.5905, Email: service@minutemanpostdrivers.com .



**Minuteman Marketing, Inc.,
a Subsidiary of Rhino Tool Company**

**1134 West South St.
P.O. Box 111
Kewanee, IL 61443
United States of America
Phone: 000-000-0000
Fax: 309-856-5905**

www.minutemanpostdrivers.com

